

ROLANDO  
CHEFWEAR



# Core Range

PRODUCT  
CATALOGUE



# THE Rolando Chefwear STORY



**Our Chefwear range was launched on the success of Rolando, our parent brand.** Rolando is well-known for producing modern workwear classics and uniform solutions of enduring quality. We hope you will enjoy our carefully crafted selection of unisex chefwear and hospitality workwear, branded with our signature skillet logo as a symbol of the quality you will come to expect from Rolando Chefwear.



**Want to stay in the loop?**

Scan the QR code to sign up for our newsletter to get the latest on product launches, updates, and exclusive offers.



# Chef Jackets and Baggies

*Classic whites, essential sepia, bold black, and dynamic denim paired with woven stripes, houndstooth, or gingham.*



## Ainsley White Long Sleeve

### Unisex Executive Chef Jacket

ROL-CJT-AIN-WHI  
Fabric: 65% Polyester,  
35% Cotton Twill  
Size: SS – 5XL



## Maison Black Long Sleeve

### Unisex Classic Chef Jacket

ROL-CJT-MAI-BLA  
Fabric: 65% Polyester,  
35% Cotton Twill  
Size: SS – 5XL



## Maison White Long Sleeve

### Unisex Classic Chef Jacket

ROL-CJT-MAI-WHI  
Fabric: 65% Polyester,  
35% Cotton Twill  
Size: SS – 5XL



## Rhodes Denim Long Sleeve

### Unisex Modern Chef Jacket

ROL-CJT-RHO-DEN  
Denim: 75% Cotton,  
25% Polyester  
Size: SS – 5XL





## Pascal White Short Sleeve

### Unisex Classic Chef Jacket

ROL-CJT-PAS-WHI  
Fabric: 65% Polyester,  
35% Cotton Twill  
Size: SS – 5XL



## Pascal Sepia Short Sleeve

### Unisex Classic Chef Jacket

ROL-CJT-PAS-SEP  
Fabric: 65% Polyester,  
35% Cotton Twill  
Size: SS – 5XL



## Utility Pockets:

We've included essential storage spaces for culinary professionals, allowing them to keep essential tools and utensils within arm's reach. From thermometers and tasting spoons to pens and notepads, these pockets enable chefs to stay organized and efficient in the fast-paced kitchen environment.

## Pascal Black Short Sleeve

### Unisex Classic Chef Jacket

ROL-CJT-PAS-BLA  
Fabric: 65% Polyester,  
35% Cotton Twill  
Size: SS – 5XL





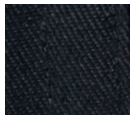
## Style Tip:

Pairing our chef jackets with the right baggies for the best look couldn't be easier! Stick with a monochrome palette, or contrast your jacket with a complimentary colour.

### Torres Solid Black Twill

**Unisex Woven  
Baggy Trouser**

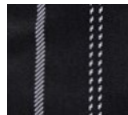
ROL-CBA-TOR-BLA  
Fabric: 65%  
Polyester, 35%  
Cotton Twill  
Size: SS – 5XL



### Elliot Black/White Stripe

**Unisex Woven  
Baggy Trouser**

ROL-CBA-ELL-STR  
Fabric: 65%  
Polyester, 35%  
Cotton Twill  
Size: SS – 5XL



### Elliot Navy/White Houndstooth

**Unisex Woven  
Baggy Trouser**

ROL-CBA-ELL-HOU  
Fabric: 65%  
Polyester, 35%  
Cotton Twill  
Size: SS – 5XL



### Elliot Black/White Gingham

**Unisex Woven  
Baggy Trouser**

ROL-CBA-ELL-CHE  
Fabric: 65%  
Polyester, 35%  
Cotton Twill  
Size: SS – 5XL





# Accessories

*Finish off the look with one of our three beanie styles,  
a full apron, or half apron.*



## Cruz Black Bistro Apron

**Half apron with  
pockets & cloth loop**  
ROL-CAH-CRU-BLA  
Fabric: 65% Polyester,  
35% Cotton Twill  
Size: One Size



## Cruz Sepia Bistro Apron

**Half apron with  
pockets & cloth loop**  
ROL-CAH-CRU-SEP  
Fabric: 65% Polyester,  
35% Cotton Twill  
Size: One Size



## Black Buff

**Multi-functional  
head or neck buff  
accessory**  
ROL-CBF-BUFF-BLA  
Fabric: 95% Cotton,  
5% Elastane  
Size: One Size



## Caines Denim Bistro Apron

**Half apron with  
pockets & waist ties**  
ROL-CAH-CAI-DEN  
Denim: 75% Cotton,  
25% Polyester  
Size: One Size





## Finley Sepia Full-Length Apron



**Full-length apron with adjustable neck strap, back ties, and pockets**

ROL-CAF-FIN-SEP

Fabric: 65% Polyester,  
35% Cotton Twill

Size: One Size

## Finley Black Full-Length Apron



**Full-length apron with adjustable neck strap, back ties, and pockets**

ROL-CAF-FIN-BLA

Fabric: 65% Polyester,  
35% Cotton Twill

Size: One Size

## Jordi Denim Full-Length Apron



**Full-length apron with adjustable neck strap, back ties, and pockets**

ROL-CAF-JOR-DEN

Denim: 75% Cotton,  
25% Polyester

Size: One Size



## Devon Sepia Bandana

**Woven chef bandana with tie-backs**

ROL-CBA-DEV-SEP  
Fabric: 65% Polyester, 35% Cotton Twill  
Size: One Size



## Devon Black Bandana

**Woven chef bandana with tie-backs**

ROL-CBA-DEV-BLA  
Fabric: 65% Polyester, 35% Cotton Twill  
Size: One Size



## Chester Denim Beanie

**Denim chef beanie with Velcro strap**

ROL-CBE-CHE-DEN  
Denim: 75% Cotton, 25% Polyester  
Size: One Size



## Fergus Sepia Beanie

**Woven chef beanie with elasticated back**

ROL-CBE-FER-SEP  
Fabric: 65% Polyester, 35% Cotton Twill  
Size: One Size



## Fergus Black Beanie

**Woven chef beanie with elasticated back**

ROL-CBE-FER-BLA  
Fabric: 65% Polyester, 35% Cotton Twill  
Size: One Size





# Shirts & Denims

*Outfit your team in shirts and denim that deliver comfort, durability, and a polished presentation.*



## Alex Mens Oxford Short Sleeve Shirt

### Mens Cotton Rich Oxford Shirt

ROL-CH1-ALE  
Fabric: 70% Cotton,  
30% Polyester  
Size: S – 5XL  
Colours: Grey (featured),  
Black, Navy



## Alex Mens Oxford Long Sleeve Shirt

### Mens Cotton Rich Oxford Shirt

ROL-CH2-ALE  
Fabric: 70% Cotton,  
30% Polyester  
Size: S – 5XL  
Colours: Grey (featured),  
Black, Navy



## Keli Ladies Oxford Short Sleeve Shirt

### Ladies Cotton Rich Oxford Shirt

ROL-CH3-KEL  
Fabric: 70% Cotton,  
30% Polyester  
Size: 28 – 50  
Colours: Grey,  
Black (featured), Navy



## Keli Ladies Oxford Long Sleeve Shirt

### Ladies Cotton Rich Oxford Shirt

ROL-CH4-KEL  
Fabric: 70% Cotton,  
30% Polyester  
Size: 28 – 50  
Colours: Grey,  
Black, Navy (featured)



## Think Textural:

Create a cohesive look with shirts in a unified colour palette, while adding visual interest by mixing textures, fabrics and shirt styles for subtle contrast and depth.

### Austin Unisex Cotton T-Shirt

**Unisex Fit  
Super Combed  
Cotton T-Shirt**

ROL-CHT-AUS  
Fabric: 100% Cotton (165gsm)  
Size: SS – 4XL  
Colours: Navy (featured),  
Black, Grey Melange



### Colby Mens Golf Shirt

**Mens Three Button  
Pique Knit Golfer**

ROL-CG1-COL  
Fabric: 52% Polyester,  
48% Cotton (220gsm)  
Size: SS – 5XL  
Colours: Navy (featured),  
Black, Charcoal Melange



### Colby Ladies Golf Shirt

**Ladies Three Button  
Pique Knit Golfer**

ROL-CG2-COL  
Fabric: 52% Polyester,  
48% Cotton (220gsm)  
Size: SS – 5XL  
Colours: Navy (featured),  
Black, Charcoal Melange





## Dynamic Denim

Lightweight and versatile, our denim shirts serve as a stylish neutral that complements any colour palette—perfect worn buttoned up or layered over a crisp white T-shirt.

### Remi Mens Denim Long Sleeve Shirt

#### Mens Blue Denim Shirt

ROL-CH2-REM-DEN  
Fabric: 100% Cotton  
(4.5 Ounce Denim)  
Size: S – 5XL



### Tammy Ladies Denim Long Sleeve Shirt

#### Ladies Blue Denim Shirt

ROL-CH4-TAM-DEN  
Fabric: 100% Cotton  
(4.5 Ounce Denim)  
Size: 28 – 50



### Isabella Regular Length Denim Skirt

#### Ladies Blue-Black Cotton Poly Stretch Denim Skirt

ROL-CS1-ISA-BBL  
Fabric: 80% Cotton,  
18% Polyester,  
2% Spandex  
(9.5 Ounce Denim)  
Size: 28 – 50





## Aldo Regular Fit Mens Stretch Denim Jeans



### Mens Blue-Black Cotton Poly Stretch Denim

ROL-CJ1-ALD-BBL  
Fabric: 80% Cotton, 18% Polyester, 2% Spandex  
(9.5 Ounce Denim)  
Size: 28 – 50

## Nadia Regular Fit Ladies Stretch Denim Jeans



### Ladies Blue-Black Cotton Poly Stretch Denim

ROL-CJ3-NAD-BBL  
Fabric: 80% Cotton, 18% Polyester, 2% Spandex  
(9.5 Ounce Denim)  
Size: 28 – 50

## Diego Mens Slim-Fit Denim Jeans



### Mens Blue-Black Cotton Poly Stretch Denim

ROL-CJ2-DIE-BBL  
Fabric: 80% Cotton, 18% Polyester, 2% Spandex  
(9.5 Ounce Denim)  
Size: 28 – 50

## Gia Ladies Slim-Leg Denim Jeans



### Ladies Blue-Black Cotton Poly Stretch Denim

ROL-CJ4-GIA-BBL  
Fabric: 80% Cotton, 18% Polyester, 2% Spandex  
(9.5 Ounce Denim)  
Size: 28 – 50





# CHEFWEAR OF Enduring Quality FOR THE PRO'S

*Ready to elevate your culinary team's look?  
We promise a service that you won't easily forget.  
Email us today or shop online.*

## **SHIPPING OPTIONS:**

- 1. Free Click-and-Collect:** from our showrooms in Johannesburg, Cape Town, or Durban.
- 2. Courier:** ship it to your door with one of our local couriers. This cost is calculated once order is confirmed. Orders to the value of **R1500 or more qualify for free delivery.**

**ROLANDO**  
CHEFWEAR

---

[www.rolandochefwear.co.za](http://www.rolandochefwear.co.za)

orders@rolandochefwear.co.za | +27 31 792 6580